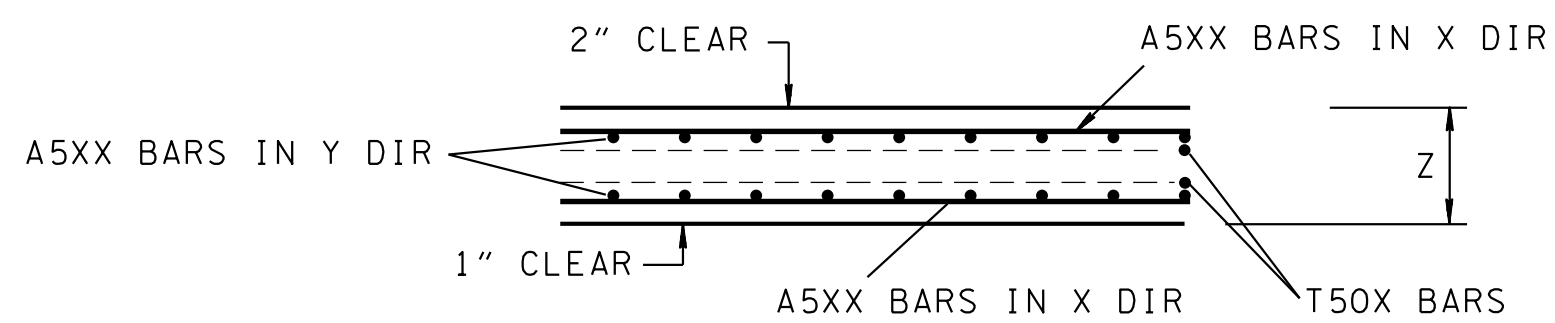
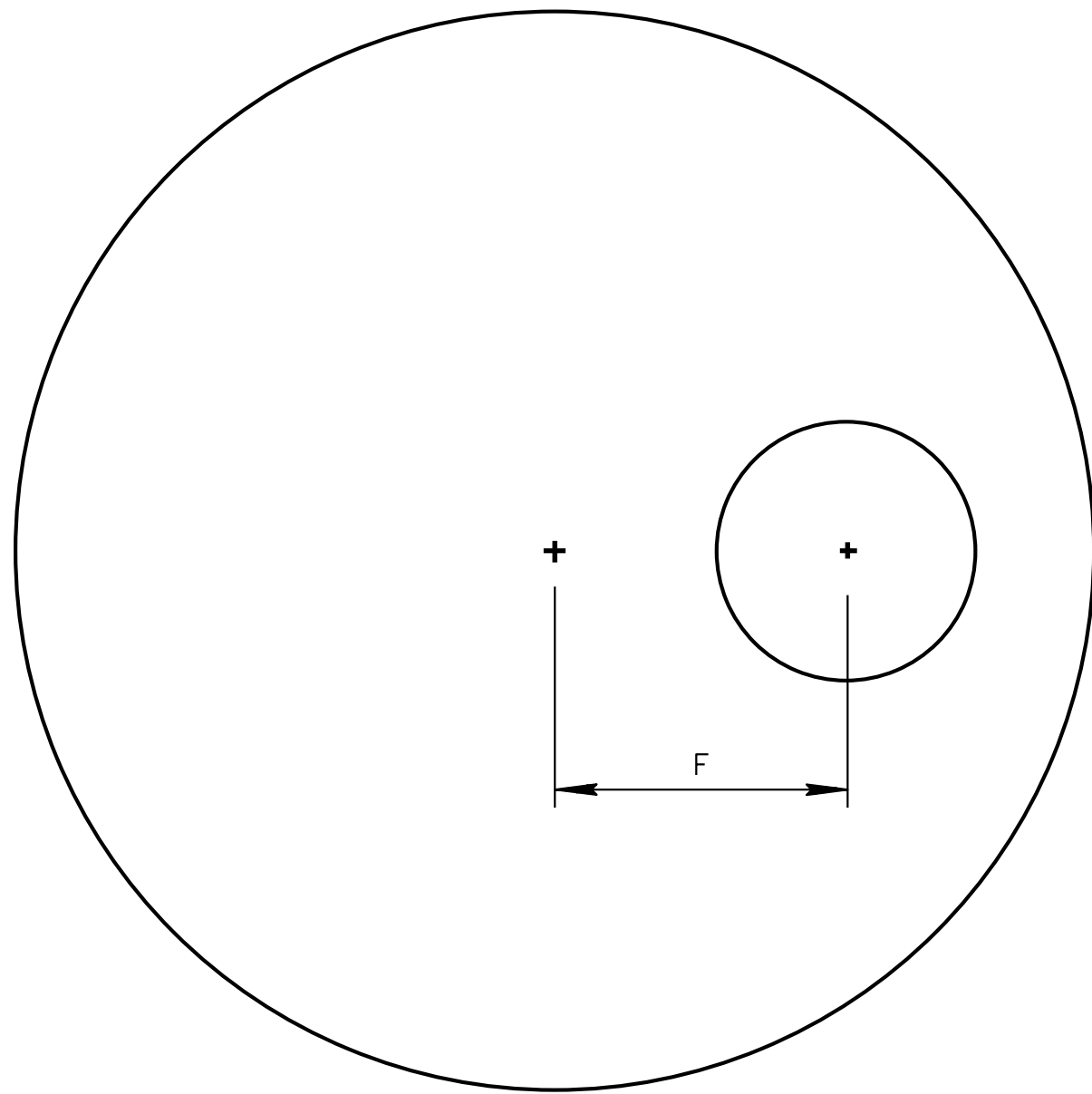


TYPICAL REINFORCEMENT PLAN



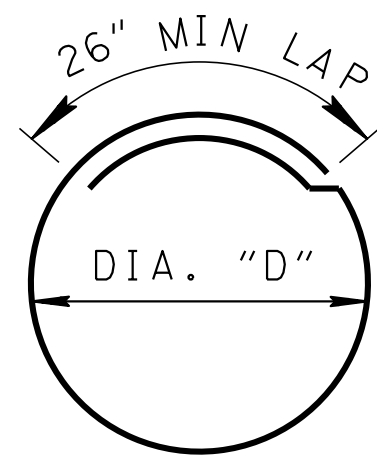
TYPICAL SECTION

MANHOLE DIMENSIONS TABLE								
MANHOLE SIZE	A (IN)	B (IN)	D (IN)	F (IN)	X (IN)	Y (IN)	Z (IN)	T (IN)
48"	6.5	5	58	9	5	6	8	51⅝
60"	5.75	6	72	15	5.5	6	8	65⅝
72"	7	8	86	21	6	6	9	79⅝
84"	8	8	100	27	6	6	9	93⅝
96"	9	9.75	114	33	6	6	10	107⅝
108"	7	11.5	128	39	6	6	10	121⅝
120"	8	10.5	142	45	6	6	10	135⅝



MANHOLE CUTOUT LOCATION

T BAR DETAILS



LENGTH OF T BAR

$L=7\varnothing D+26"$



A BARS DETAILS

③

GENERAL NOTES

- ① THE FOLLOWING MATERIAL PROPERTIES ARE REQUIRED
CONCRETE: $f_c' = 4,000$ POUNDS PER SQUARE INCH AT 28 DAYS
REINFORCING STEEL: ASTM A615, $F_y = 60,000$ POUNDS PER SQUARE INCH
ALL REINFORCING IS TO BE INSTALLED AS DETAILED ON THIS DRAWING.
- ② SEE D-MH-2 FOR OTHER NOTES.
- ③ DETERMINATION OF THE LENGTH OF REINFORCING BARS IS THE RESPONSIBILITY OF THE MANUFACTURER BASED ON THE DIMENSIONS SHOWN ON THIS DRAWING.
- ④ A BARS TO END SUCH THAT 2" CLEAR DISTANCE IS MAINTAINED AROUND THE PERIMETER OF THE LID AND AROUND THE MANHOLE CUTOUT.
- ⑤ A BARS SHORTER THAN 9.5" MAY BE OMITTED.
- ⑥ THE FIRST A BAR FROM THE CUTOUT HOLE SHALL BE SHIFTED TO THE 2" CLEAR IF IT WOULD OTHERWISE BE CLOSER THAN 2" TO THE CUTOUT HOLE IF THE TYPICAL SPACING WHERE FOLLOWED.
- ⑦ ADD ONE BAR HALF WAY BETWEEN THE FIRST TWO BARS AROUND THE MANHOLE CUTOUT, THE EXTRA BAR IS NOT REQUIRED ON THE SHORT SIDE (SHOWN ON RIGHT SIDE ON THIS DRAWING).
- ⑧ SEE D-CB-99 FOR JOINT DETAIL BETWEEN LID AND STRUCTURE.

- ❑ REV. 4-15-00: CHANGED LID THICKNESS FOR 96" DIAMETER.
- REV. 8-01-12: REVISED MANHOLE LIDS FOR COMPLIANCE WITH AASHTO LRFD BRIDGE DESIGN SPECIFICATIONS, 4TH EDITION WITH INTERIMS. REVISED REINFORCING AND ADDITIONAL MISC. DRAFTING EDITS. ADDED 48" MANHOLE LID & MOVED 96" MANHOLE LID TO STANDARD DRAWING D-MH-3A.
- ❑ REV. 4-21-14: VOIDED D-MH-3A AND D-MH-3B REVISED REINFORCING DETAILS.

❑ MINOR REVISION -- FHWA APPROVAL NOT REQUIRED.

STATE OF TENNESSEE
DEPARTMENT OF TRANSPORTATION

TYPICAL DESIGN
OF
LIDS FOR
NO. 3
MANHOLE